

## VEHICLE INSPECTION REPORT

**SJ16NXB**

### Mercedes-Benz Antos 1827

#### Inspection

Serious Damage? No

#### Vehicle

VAT Plus VAT

V5 Present

#### Details

Reg. date	07/05/2016	Body Style	Fridge Box	Axle Combi	4x2
Year	2016	Keys	2	Steering Combi	Steer
Mileage	434,468 Km Warranted	MOT Due	30/09/2025	Rear Suspension	Air
Fuel Type	Diesel	Cab Type	DAY CAB	Rear Doors	Barn
Colour	WHITE	Gearbox	AUTO	Tail Lift	Tuckaway
VIN	WDB96300320055772	Doors	2		

\*WARNING LIGHT ON DASH\* FRIGOBLOCK FRIDGE UNIT

#### Tyres

NSF	NSI1	NSI2	NSI3	NSI4
OSF	OSI1	OSI2	OSI3	OSI4
Spare	NSO1	NSO2	NSO3	NSO4
	OSO1	OSO2	OSO3	OSO4

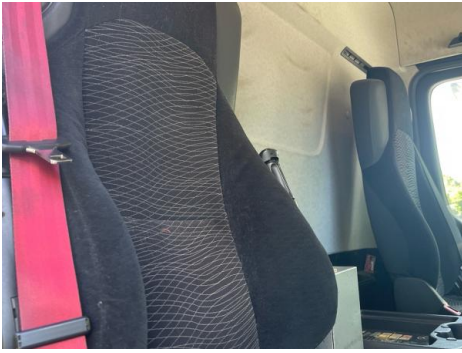
### Features

- Bluetooth connection
- Radio/CD
- Central locking
- Cloth seat trim

### Photos

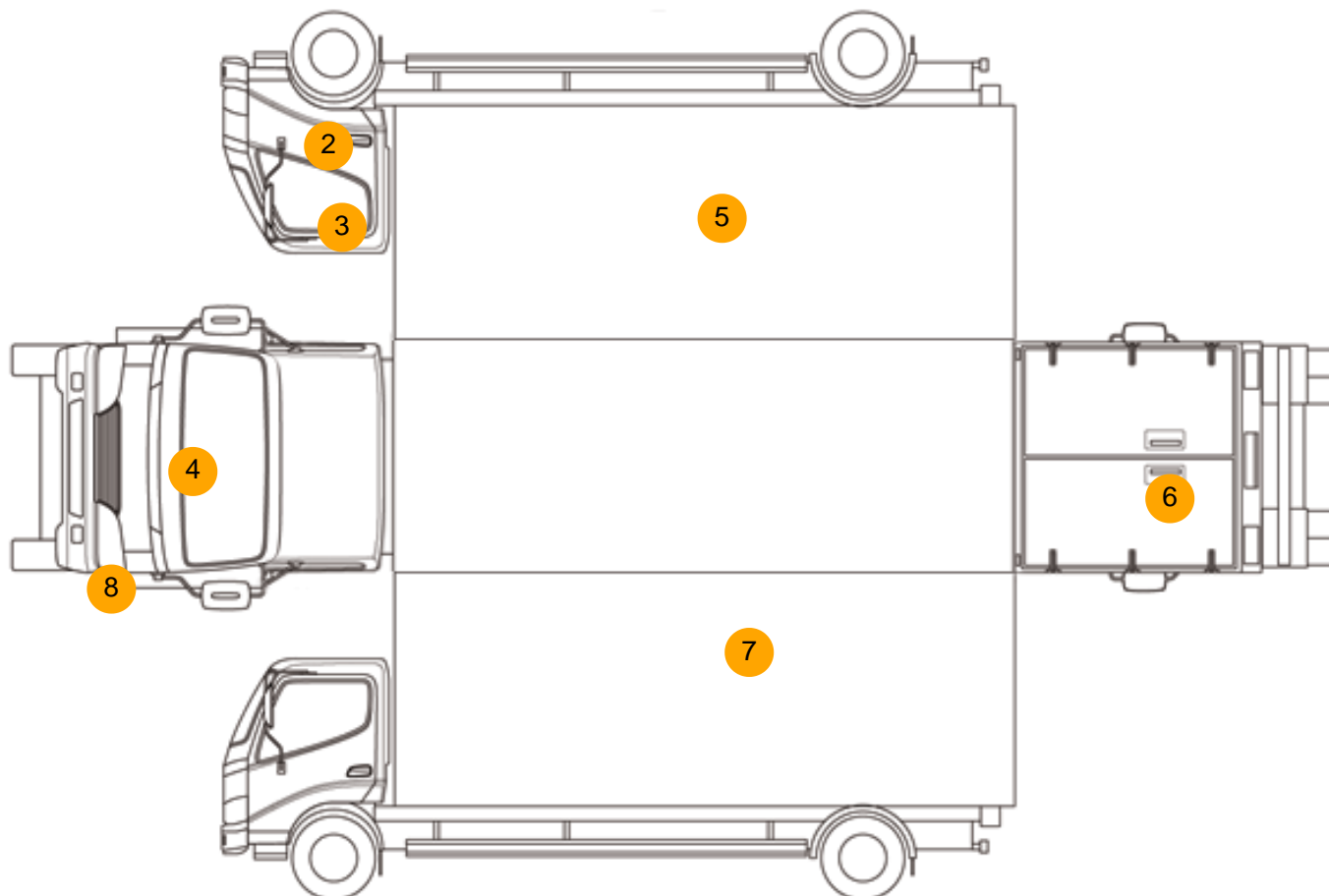








## Condition Check



## Damage Photos



1: Seat Base Cover osf  
Torn  
Over 3mm



2: Door Moulding osf  
Scuffed (Unpainted)  
Over 100mm



3: Door osf  
Dented  
With Paint Damage



4: Bonnet  
Scratched  
UpTo 25mm Thru Paint



5: Qtr Panel osr  
Dented  
With Paint Damage



6: Tailgate  
Rusted  
Over 5mm



7: Qtr Panel nsr  
Dented  
With Paint Damage



8: Bumper Front Moulding  
Scuffed (Unpainted)  
Over 100mm

## Interior

Carpet Condition		Average	Upholstery Condition		Average
Seat Condition			Odour		
Engine Runs		OK	Gearbox 1st and Reverse Test		OK
Brakes		OK	Clutch Slip Test from Static		OK
Turbo Boosting		OK	Gearbox Static Gear Selection (engine running)		OK
Parking Brake		OK	No Excessive Smoking		OK
EML light illuminated		OK	Oil warning light illuminated		OK
Airbag light illuminated		OK	DPF light illuminated		OK
ABS light illuminated		OK	Service indicator light illuminated		OK
Windows		OK	Radio		OK
			Steering		OK